

# Jigsaw Jenie's Journey

Being Me In My World

Who am I and how do I fit in?

Happy

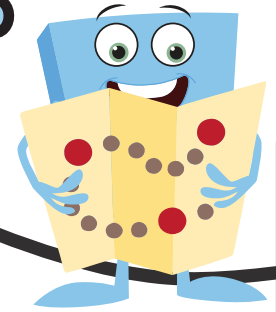
Friend

Gentle

Kind

Feelings

Sharing



Angry

Taking Turns

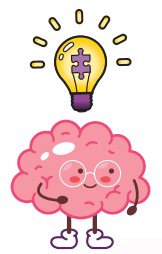
Nervous

Excited

What can you see?

I will learn about...

- How we are similar and different
- Different feelings
- How to manage my feelings
- Why it is good to be kind
- Using gentle hands
- Our right to play and learn
- What being responsible means



# Jigsaw Jenie's Journey

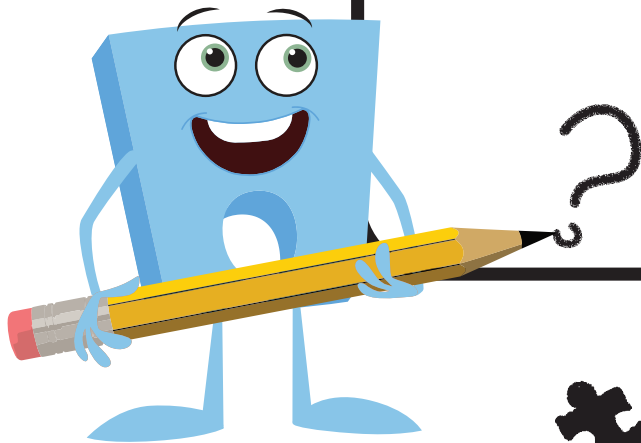
What do you like to play with?  
Is it the same as everyone else?

What does it mean to have kind hands?

## Our Class Thinking Pad

What have we learnt in this puzzle that helps us in our world?

I wonder how you can be responsible at school today?



Being Me In My World